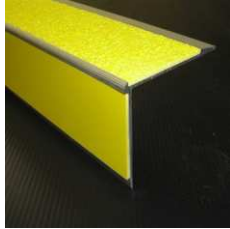
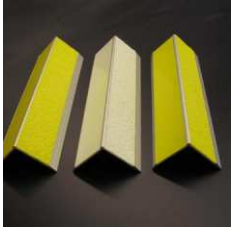




DDA Compliant Anti Slip Nosings

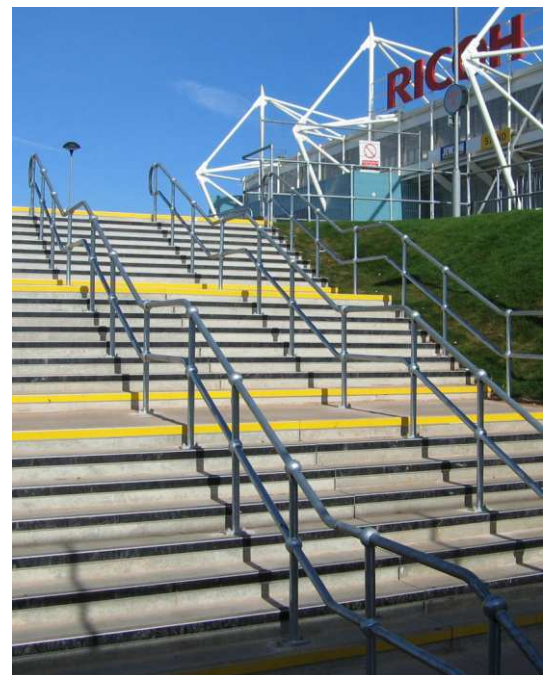


GRIPFAST DDA (Disability Discrimination Act) Compliant Anti Slip Nosings have been designed to enable customers to comply with the requirements of the Disability Discrimination Act and Part M of the Building Regulations.

The regulations state that a stepped access will satisfy requirement M1 or M2 if '...all nosings are made apparent by means of a permanently contrasting material 55mm wide on both the tread and the riser' GRIPFAST DDA Compliant Anti Slip Nosings incorporate this colour constant and contrasting nosing, thereby ensuring compliance with the DDA recommendations and Building Regulations.

GRIPFAST DDA Compliant Anti Slip Nosings are manufactured from a chamfered aluminium extrusion into which is added a durable GRP (glass reinforced polyester) infill strip. The top surface of the infill strip incorporates an anti slip finish whilst the riser is left smooth for ease of clean-ability.

GRIPFAST DDA Compliant Anti Slip Nosings can be supplied in a range of finishes, aggregate grades and an almost infinite number of colours and are suitable for use on timber, concrete and flat steel substrates. GRIPFAST DDA Compliant Anti Slip Treads are suitable for both internal and external use and are resistant to oil, grease and most chemicals. They are designed to be bonded and mechanically fixed to a structurally sound and level substrate and will provide a guaranteed slip resistant surface for up to 30 years.



Product Benefits

- Installation of product ensures compliance with current DDA (Disability Discrimination Act) and Building Regulations
- Available in an infinite number of colours and a range of patterns ensures that DDA compliant nosings can be optimally matched to the environment.
- Anti slip properties meet the UK guidelines for slip resistance, minimising the risk of slip accidents.
- Design life guarantee of thirty years ensures a long life for an installation
- Colour constant product means that the finished look will not require re-painting
- Panels are tailor-made to specific length and width requirements for optimal fit
- Option to have smooth risers on the treads ensures product is easy to keep clean
- Option to have chamfered leading edge eliminates the risk of trips.

Product Thickness

- 2mm chamfered extrusion incorporating a 2mm infill strip,

Aggregate grades:

- Barefoot, Pedestrian, Heavy Pedestrian, Offshore

Colours

- Any BS or RAL colour available

Finishes

- Plain, Grooved

Maximum size

- Nosings are sold by the linear metre. The longest single length of aluminium is 3000mm, but nosings can be butt-jointed together to cover longer lengths. The longest single strip of infill piece is 2440mm, but again infill pieces can be butt-jointed together to sit into longer lengths of aluminium.

POLYDECK LTD
Unit 14, Burnett Industrial Estate
Cox's Green
Wrighton
Bristol
BS40 5QS