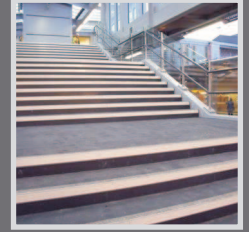
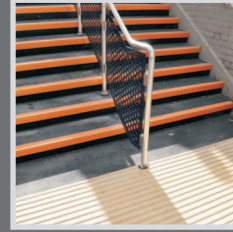
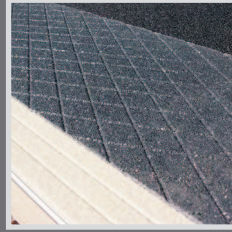
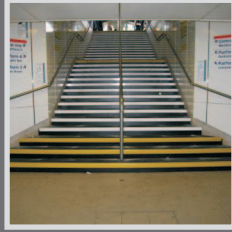




DDA Compliant Treads

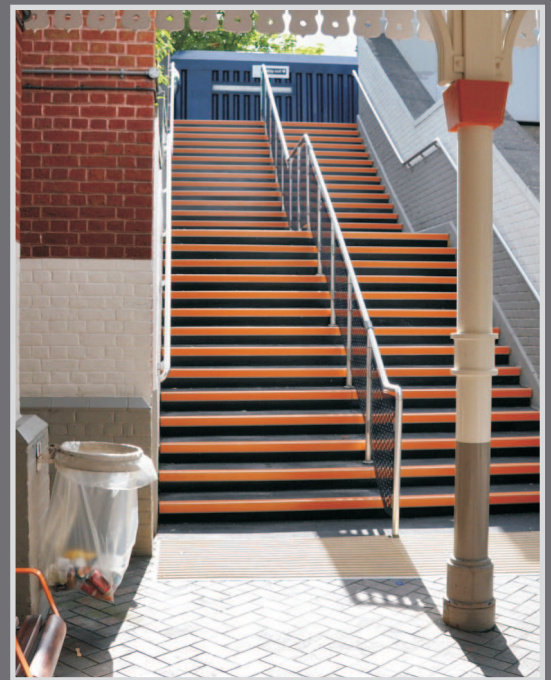


GRIPFAST DDA (Disability Discrimination Act) Compliant Anti Slip Treads have been designed to enable customers to comply with the requirements of the Disability Discrimination Act and Part M of the Building Regulations.

The regulations state that a stepped access will satisfy requirement M1 or M2 if '...all nosings are made apparent by means of a permanently contrasting material 55mm wide on both the tread and the riser' GRIPFAST DDA Compliant Treads incorporate this colour constant and contrasting nosing, thereby ensuring compliance with the DDA recommendations and Building Regulations.

GRIPFAST DDA Compliant treads are manufactured from a durable GRP (glass reinforced polyester) incorporating a 'near-diamond-hard' finish. They can be supplied in a range of finishes, aggregate grades and an almost infinite number of colours.

Suitable for use on timber, concrete, steel, and open grating, GRIPFAST DDA Compliant Anti Slip Treads are suitable for both internal and external use and are resistant to oil, grease and most chemicals. They are designed to be bonded and mechanically fixed to a structurally sound and level substrate and will provide a guaranteed slip resistant surface for up to 30 years.



Product Benefits

- Installation of product ensures compliance with current DDA (Disability Discrimination Act) and Building Regulations
- Available in an infinite number of colours and a range of patterns ensures that DDA compliant treads can be optimally matched to the environment.
- Anti slip properties meet the UK guidelines for slip resistance, minimising the risk of slip accidents.
- Design life guarantee of thirty years ensures a long life for an installation
- Colour constant product means that the finished look will not require re-painting
- Panels are tailor-made to specific length and width requirements for optimal fit
- Option to have smooth risers on the treads ensures product is easy to keep clean
- Option to have chamfered leading edge eliminates the risk of trips.

Product Thickness

- 6mm,

Aggregate grades:

- Barefoot, Pedestrian, Heavy Pedestrian, Offshore

Colours

- Any BS or RAL colour available

Finishes

- Plain, Diamond Pattern, Tile Effect, Timber Planking effect

Maximum size

- Treads are made-to-measure from 1220mm x 2440mm panels but can be grooved and interlocked with an aluminium joining piece to create longer / wider treads.

POLYDECK LTD
Unit 14, Burnett Industrial Estate
Cox's Green
Wrighton
Bristol
BS40 5QS